

# A View from the Rectory

Let's pretend January is a house we are thinking of buying. It ticks all our boxes of a new start somewhere fresh, a chance to de-clutter, strip away the excess, and even find a few hidden treasures hidden in boxes packed during the last house move. OK - so it may only have been a year ago - Isn't it amazing what you forget you had tucked away for 'later'!

So, we are old hands at this moving lark - we've done the survey, the 2<sup>nd</sup> visit, the questioning, and the looking into dark recesses. Maybe we've even asked someone to come give the boiler a once-over, checking the valves are working so to speak. Our key is in the front door, we do not have an anxious, on-commission, agent peering over our shoulder, and we have some time to really look at this new house that potentially might be our new home for 2014. How does it feel? Is this new move an exciting one or would you like time to pause awhile? Or even turn the clock back and change last year?

We seem to spend every New Year's Day like house purchasers walking through a prospective new home - looking for flaws, working out the cost of repairs, perhaps criticising the decor, mentally planning to rip out the old and carry out a massive refurbishment. We might perhaps, with imagination, place the baggage and furniture of our former existence in this new house, trying it on for size; we may be pleasantly surprised at how much it feels like home already. Or perhaps we don't feel we have all that much to bring with us?

Maybe we ought to move through the new house not looking for flaws, but for potential. Hard-wired into our psyche are the expectations of a new year - and how many times do we look ahead without ever truly appreciating the year that has gone before, focussed on *Better, More, Harder Work, Change this, Pursue that?* As if what we are in our deepest selves is somehow like a worn old house someone views with hard-nosed realism, and wants to change without really valuing the history of the house.

This year we might try a new approach: to come into the House of 2014 ready to work on the bits of ourselves that need a good overhaul, including our oft neglected souls, while at the same time looking with compassionate eyes on the history that makes and shapes the very individual and utterly unique people we are, and finding that we are worth loving.

Maria Shepherdson

## Have you lost a black and white cat?

A very hungry stray black and white cat has appeared round and about West Overton church and is being fed by people in the neighbouring cottages. If this cat belongs to you please contact 01672 861194

## Avebury Rainbows

Last term many of the weekly themes were based around water and the girls enjoyed having a talk from the Canal Trust on water safety. They also worked for a new roundabout badge.

We start back next term on Tuesday 14th January.

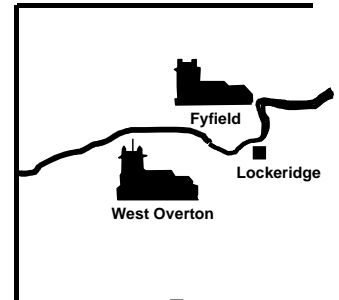
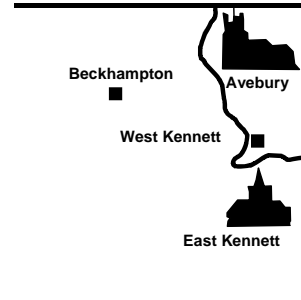
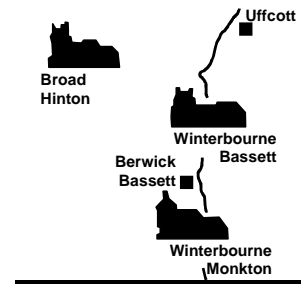
If your daughter would like to be a Rainbow please either ring, or go to [www.girlguiding.org.uk/interested](http://www.girlguiding.org.uk/interested).

We are full up in January but will have some spaces in April when our 7 year olds move onto Brownies.

Sandra Hues. 01672 539444

# January 2014

## Upper Kennet News



BERWICK BASSETT to FYFIELD  
Edition



### Upper Kennet Churches Notice Board

#### Baptism

Fraser Manley	1 December	West Overton
Zach Byworth	15 December	Broad Hinton

#### Funeral

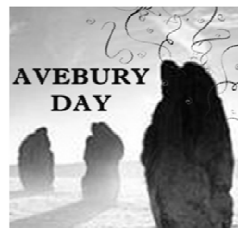
William Fitzpatrick	19 December	Broad Hinton
---------------------	-------------	--------------

#### Burial of Ashes

David Malpas	17 December	Broad Hinton
--------------	-------------	--------------

### ONE DATE FOR YOUR DIARY

MAKE SURE IT'S THIS ONE!!



Saturday 13<sup>th</sup>

September 2014

12:00

Avebury Sports Field

### YOUR VILLAGE NEEDS YOU!

Are you interested in holding a stall on the day?

If so please get in touch with either Lynzey Paradise:

[lynnzp@gmail.com](mailto:lynnzp@gmail.com), 07825153808 or Dominic Fry:

[dominic\\_m\\_fry@yahoo.co.uk](mailto:dominic_m_fry@yahoo.co.uk), 07961316173

To keep up to date with what's happening visit:

[www.aveburyday2014.org.uk](http://www.aveburyday2014.org.uk)

## HAPPY NEW YEAR

To all the contributors to the **Upper Kennet News** and the 30+ volunteers that produce and distribute 877 copies every month. I also must thank the advertisers and donors without whom this magazine could not pay its £4000 a year running costs. Without your help so freely given there would be no voice for local groups within the community delivered free to every home.

Thank you all. David

## UPPER KENNET CHURCHES SERVICES

<b>5 January</b> Epiphany <i>Env. Week 1</i>	10.30am	St Katherine & St Peter, Winterbourne Bassett	BENEFICE SERVICE – Communion
<b>12 January</b> Baptism of Christ <i>Env Week 2</i>	8.00am 9.45am 10.00am 10.30am	Christ Church, East Kennett St Peter ad Vincula, Broad Hinton St James, Avebury St Mary Magdalene, Winterbourne Monkton	Prayer book Communion Prayer Book Matins Holy Communion Holy Communion
<b>19 January</b> Epiphany 2 <i>Env Week 3</i>	10.30am	St James, Avebury	BENEFICE SERVICE – Communion
<b>26 January</b> Epiphany 3 <i>Env week 4</i>	10.00am 10.30am 11.15am 4.00pm 4.00pm	St Michael & All Angels, West Overton St Mary Magdalene, Winterbourne Monkton St Katherine & St Peter, Winterbourne Bassett St James, Avebury St Michael & All Angels, West Overton	Holy Communion Holy Communion Morning Prayer Evensong BENEFICE CHRISTINGLE CHILDREN AND FAMILY SERVICE

### Wednesday Communion Services

will take place at 10.00 am at 9, The Beeches, Winterbourne Monkton. Clergy will attend on the first and third Wednesdays of each month.

We can also provide home communion any time for those that are housebound. Please contact the Benefice Office— (01672 861786) or one of the Lay Pastoral Assistants to request this. (Claire Stiles – 01793 731620 or Graham Kitchen – 01672 861349.)

## THANK YOU

Thank you to all friends in Rawlins Park and throughout the Benefice for cards, letters, visits and phone calls following the death of my sister.

Also thank you for the continuing support being given to both of us during Paul's cancer treatment.

Maureen

## HELEN STACEY'S FUNERAL

Stephen Stacey and the family would like to thank the many people in the Benefice who attended Helen's funeral on 16<sup>th</sup> November at St James, Avebury. They were deeply touched by the numbers attending and the messages of condolence, and in particular those who produced the generous refreshments.

## Readings for month

**5 January 2014 – White**

**Christmas 2**

Jeremiah 31. 7 – 14

Psalms 147 13 – end

Ephesians 1. 3 – 14

John 1. 1 – 18

**12 January 2014 –**

**Gold or White**

**Baptism of Christ**

Isaiah 42. 1 – 9

Psalms 29

Acts 10. 34 – 43

Matthew 3. 13 – end

**19 January 2014 – White**

**Epiphany 2**

Isaiah 49. 1 – 7

Psalms 40. 1 – 12

1 Corinthians 1. 1 – 9

John 1. 29 – 42

**26 January 2014**

**White**

**Epiphany 3**

Isaiah 9. 1 – 4

Psalms 27. 1, 4 – 12 [or 27. 1 – 11]

1 Corinthians 1. 10 – 18

Matthew 4. 12 – 23

**2 February 2014 –**

**Gold or White**

**Presentation of Christ in the Temple**

Malachi 3. 1 – 5

Psalms 24 [1 – 6] 7 – end

Hebrews 2. 14 – end

Luke 2. 22 – 40



**COME AND JOIN YOUR FRIENDS  
AND NEIGHBOURS  
FROM ALL VILLAGES  
AT  
WEST OVERTON CHURCH  
Saturday 18th January  
2014**

**Drop in any time from 10.00-12.00 at the church**

There will be tea, coffee, squash and home-made cakes & biscuits and some activities for children - and a chance to catch up with friends and neighbours.

Meet old friends and make new ones!

Donations to help meet costs are welcome on the morning.

Any surplus funds will be donated to the churches.

**Please let us know if you are able to help on the day or would like to make a cake or some biscuits.**

**For details/offers of help/baking please contact**

**Anne Robinson on 861786**

**EVERYONE IS WELCOME!**

## **NEWS FROM THE TOWER**

Ringling Times: 12<sup>th</sup> January, 9.30 - 10am.

19<sup>th</sup> January, 10 - 10.30am.

26<sup>th</sup> January, 5.30 - 6pm.

Practice Nights: Tuesdays, 7.30 - 9.00 pm.

There is a chill in the tower at this time of year, not helped by a very draughty window and door, but we were all warmed, recently, when we were given a large tin of chocolates, by Sara and Chris, whose wedding we rang for in September. The sweet tin is the most important item in the tower, if the ringing goes well it is passed round and if it doesn't go well, round it goes again! Thank you to Sara and Chris for this welcome gift.

Last year, for the first time, the Calne and Devizes Branches held a joint Carol Service at Yatesbury, which was so successful that it was repeated this year at Rowde, on 14<sup>th</sup> December; the church was packed and the singing robust. The lessons were read by ringers from both branches. After a lovely tea, the evening ringing was at St. John's church, Devizes.

On the 16<sup>th</sup> November, we rang the bells half-muffled before the thanksgiving service for the Revd. Doctor Helen Stacey, Brian tolled the old tenor bell, briefly, during the burial of this unique lady who was one of the first lady doctors and also one of the first lady priests.

A peal of Bristol Surprise Major was rung on the 19<sup>th</sup> December, 2013, by ringers from the Basingstoke area.

Mary Davidge Tel: 01672 513819  
Belfry Correspondent.

### **Calling all Flower Arrangers!**

**Do you enjoy arranging flowers? If you do, Avebury Church needs you. You don't have to be a church-goer, only willing to help us ensure that our church has flowers each Sunday. We have a rota so you would only be doing it periodically but any help would be gratefully received.**

**Please contact: Alison Kinloch  
Email: [alison@kinlochconsulting.com](mailto:alison@kinlochconsulting.com)  
Phone: 01672 539244**

## **Trussell trust Christmas boxes**

Thanks to the generosity from members of Avebury WI, Rainbows and friends we were delighted to receive enough items to fill 29 boxes which will be distributed to the very poor in Bulgaria. A tremendous response - thank you.

Sandra Hues

## **Brian Watts**

Would like to thank all his customers for their continued support and wishes them a Happy New Year!

# Avebury Parish Council

Headlines from a meeting of Avebury Parish Council  
on 3 December 2013

**Planning applications:** We noted that a number of improvements have been made during the pre-application stage to a proposal for a grain store on the site of the existing silage clamp at Windmill Hill Corner. We decided to support the application subject to two conditions, to prohibit any extra road signage from the A4361 and to minimise the impact of lighting around the building. We also decided to support an application for a garage and car-port at Barley Cottage in South Street.

**Membership:** Following Judy Miller's move to Broad Hinton, Wiltshire Council has confirmed that the public has not requested an election for her place on the Parish Council. We are therefore advertising the vacancy in Upper Kennet News this month and will welcome expressions of interest, especially from West Kennett and Avebury Trusloe/Bray Street which are underrepresented.

**Community scheme for parking and access in Trusloe:** Karen Kelleher, representing residents in Trusloe, and the Parish Council met representatives of Aster Housing in November and discussed a partnership scheme. Aster Housing is now drafting some options for Trusloe Cottages and Longfields with a view to meeting again at the end of January.

**Flood Group:** The Environment Agency has sent us revised information about setting a community Flood Group and a meeting for all those interested will be arranged in January. The Group will address flooding issues in Beckhampton as well as Avebury/Trusloe. Contact Andrew Williamson (539 284) or Maggie Lewis (539 607) if you're interested or want more details.

**High Street re-surfacing:** Works to the High Street are now largely complete and we are pressing for the culvert at the end of the High Street to be cleared.

**Free Community Wi-Fi:** The first community Wi-Fi site is based at the Henge Shop and is operating. Maggie Lewis (539 607) has now arranged a meeting in January between the Parish Council, the Marlborough Area Development Trust and the National Trust to discuss the possibility of extending the scheme by using 'hubs' in some of the Trust's buildings.

**Avebury's Winter Crisis Appeal:** The Parish Council noted the needs of a number of local people and decided to contribute £200 to the Appeal.

**Parish Precept:** The Parish Council's income comes largely from its 'precept', which is collected as part of the Council Tax. We decided at our meeting to set our total precept at £10,900 for next financial year, which compares with £11,000 for this year. The government and Wiltshire Council have however reduced the 'Precept Grant' we currently receive this year by 35%, which is about £355 in cash terms. The result will be that the precept element in Council Tax bills will not in fact reduce next year but will increase, by an average of about £1.65 for each household for the year.

We also want to help publicise some forthcoming community events:

**Wassailing on 11 January:** A group will be wassailing fruit trees in West Kennett and Avebury, starting from 2.00pm on Saturday 11 January. Meet by the Coach House (beside the Red Lion) and contact Gordon Rimes on 539 131 for more details.

**Avebury Day 2014:** A group of residents has decided to arrange Avebury Day on Saturday 13 September. If you're interested in helping, please contact Lynzey Paradise on 539 174 or Dominic Fry on 539 081.

**Jubilee Orchard:** The first fruit trees are now growing in the north-west corner of the Sports-field and a few more will be planted shortly.

**Date of next meeting:** Our next meeting will at 7.30pm on Tuesday 4 February 2013

Andrew Williamson (Acting Clerk) 539 284 and  
[clerk@aveburyparishcouncil.org](mailto:clerk@aveburyparishcouncil.org)

## AVEBURY PLAYERS

The Avebury Players will be putting on a show based on Cinderella on 6<sup>th</sup>, 7<sup>th</sup> and 8<sup>th</sup> March 2014. We are looking for one or two more actors to be involved with this production – in particular we would love to hear from young men aged between approx. 18 and 30. We are also looking for several people to help with some backstage activities – we would really appreciate some more people to help our costume and painting (backdrops etc) teams. You are guaranteed lots of laughs and a very friendly team. If you are interested or would like to find out more, either contact us by phone (numbers below) or come to the next meeting which will be on Tuesday 7<sup>th</sup> January at 7.30pm in Avebury Social Centre.

Michele Lomas 01672 539646

Mike Polak 01672 539253



11th February 2014

The Social Centre, Avebury, at 7.30pm

## Encounters with Rare Books

*An intriguing introduction to buying and selling archaeological and topographical book collections.*

On a visit to the *Castle Bookshop* in Llandyssil, Powys, Chris & Julia Snook heard the business was for sale and returned home to Eastbourne, Sussex, the new proprietors! The business has grown online and via catalogue, now serving customers in some forty countries. Rebranded *Archaeology Plus*, Chris & Julia are specialist archaeology booksellers with an interest in topography and architecture, as related disciplines.

Their talk to the Society will be as wide-ranging as the Collections they purchase. They are kindly imparting their knowledge of old and rare books on a non-commercial basis.

Chris Snook is a horticulturalist with a lifelong interest in archaeology, history, music, boats and architecture, leading to participation in archaeological digs, mountain and hill walking and an Atlantic crossing under sail. He is expert in garden centre design and management, and has lectured on these subjects extensively, notably at Hadlow College in Kent. He combines his horticultural practice with, in partnership his wife Julia, the specialist booksellers *Archaeology Plus*. For further details:

Email: [events@aveburysociety.org](mailto:events@aveburysociety.org) or telephone: 01672 539 264

*Tickets: Members £4.00, non-Members £5.00 at the door*

[www.aveburysociety.org](http://www.aveburysociety.org)

## Avebury & District W.I. Craft Group

The Craft Group holds a meeting on the afternoon of the first Wednesday of every month at the Social Centre, Avebury from 2 - 4pm.

All are welcome. You do not need to be a W.I. member to attend. The cost is £3 per session. There are quilting courses and a variety of other crafts. For further details call Margaret on 539184 or Julie on 539072.

Shop Phone Number: 01672 539200

Shop Opening Hours:

Monday- Saturday 9am-5pm

Sundays/Bank Holidays 10.30-4.30



Happy New Year

I would like to wish all our staff, customers, volunteers and committee members a Happy New Year!

Trussell Trust

Thank you to everyone who has donated food items to the Trussell Trust box in the shop. After just 2 weeks, I was able to take 37 items to the food bank. Please continue to donate to this vital cause – the box will remain in the shop.

Volunteers

We have had several new volunteers in the last couple of months and would like to welcome Shiela, Marion, Ruth, Jonathan, Louise, Matthew and Petra.

We held our shop Christmas party for volunteers in Avebury Social Centre in early December; this is one of the benefits of being a volunteer in the shop. If you would like to volunteer, please ask Lyn or Claire in the shop and someone will be in contact to arrange training for you.

Update on Products

Recent new products include, risotto rice, logs, kindling and ego fire bricks, Double Gloucester cheese from Gloucester, Kennet and Avon Beer, small bottles of fruit wines, award winning Ramsbury tea, wild boar sausages (if my son has not eaten them first!), a new range of frozen fish including undyed smoked haddock, interesting fish cakes and smoked salmon, fresh apple juice from Rowde (bottled this Autumn).

Shop Newsletter

Claire, our merchandise manager, has produced a newsletter with lots more news about the shop, please call in and ask for a copy of the latest newsletter.

Home Deliveries

We offer a home delivery service for anyone who is unable to get to the shop for age or health reasons. We deliver to Avebury, Avebury Trusloe, Beckhampton, West and East Kennet, Winterbourne Monkton and Berwick Bassett. If you would like to have a home delivery please telephone the shop on 01672 539200 and ask for Lyn or Claire.



Michele Lomas  
Chair of Avebury Community Shop

## Avebury & District Club News & Events

REMINDER – ALL MEMBERS NEED TO RENEW THEIR MEMBERSHIP IN JANUARY & NEW MEMBERS VERY WELCOME

Skittles - We are starting our Skittles for Cash for 2014 on Saturday 18<sup>th</sup> January.

Truman's Cup – Darts - This is a *members only event* held annually each January – this year it's on Saturday 11<sup>th</sup> January.

BIG Money Bingo – planned for Saturday 25<sup>th</sup> January. £10 pays for an all in package to play and a top prize of £100 makes this a very good value evening. Everyone Welcome. Eyes down 8.15pm. January

Avebury Club is available to hire, contact Alan – Secretary on 07879 486905 or call Avebury Club (when open) on 01672 539258 or visit the website to check availability.

[www.avebury-club.co.uk](http://www.avebury-club.co.uk) ALL ENQUIRIES AND BOOKINGS ARE TO BE AGREED AND FINALISED WITH THE CLUB'S SECRETARY ONLY.

## Help and support for people who care

According to the last census, there are 47,608 people in Wiltshire providing care and support to a relative, child, partner or friend who would not be able to manage on their own.

There are many reasons why someone may not be able to cope unaided including physical or mental disability, old age, long-term illness, special educational need, eating disorder or a problem with drugs or alcohol.

It is estimated that 3 in 5 people will become a carer at some point in their lives. The problem is that most people will not identify themselves as such – people simply consider themselves as a spouse, sibling, parent, grandparent or friend doing what they would be doing anyway. Many also mistake the word 'carer' with those providing *paid* care work in a residential home or domiciliary agency capacity. Carer Support Wiltshire is a charity with a team of support workers who can provide information and support to carers living in Wiltshire, at the other end of the telephone, or face to face, along with accessing to counselling and advice relating to your role. All of our services are free and confidential for anyone aged 18 and over and we can offer you the chance to have a break through social cafés, days out, activities, craft groups and complementary therapies.

We will shortly be running a monthly carers café in Marlborough where you can come along to chat with other carers over a hot drink or two.

To find out more about us, or to register for some support, please visit our website [www.carersinwiltshire.co.uk](http://www.carersinwiltshire.co.uk), email [info@carersinwiltshire.co.uk](mailto:info@carersinwiltshire.co.uk) or freephone 0800 181 4118 (01380 871690 from a mobile).

## Avebury Parish Council

### Vacancy

We have a vacancy on the Parish Council following Judy Miller's recent move to Broad Hinton and we will therefore be co-opting a new member. We would be pleased to hear from you if you might be interested, especially if you live in West Kennet or Avebury Trusloe/Bray Street which are under-represented.

For further details, please contact one of your Councillors: Andrew Williamson on 539284, Mike Bedford on 539020, Antoinette Kremer on 539644, Maggie Lewis on 539607, Karyn Pearson 539164, Keith Howell on 539091, Mike Daniel on 539098 or Paul Dixon 539690.

# Wassail

*(To or be Blessed)*

*We invite you to join us for a traditional folk blessing for our apple trees and land.*

*Noisy children with pots and pans to bang very, very welcome*

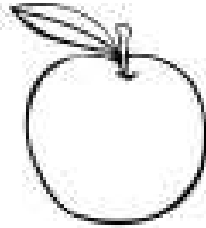
*We shall Wassail, Wassail all over the town  
(well village actually)*

*We will visit apple trees at the Community Shop, Henge Shop, Avebury Community Orchard and the Avebury Manor Orchard with traditional children's treats with Lord of the Manor.*

*We will take refreshments and perform seasonal songs, music, a Plough Play and the Vicar will bless the plough in the National Trust farm yard. After which we will all process the plough and present it to Mr Farthing for the success of our local farms and the coming harvest. You are invited to join the Wassailers at the Red Lion for further celebrations afterwards.*

*When: Saturday 11<sup>th</sup> January at 1400*

*Where: Top of Avebury High Street in the café courtyard*



**Wiltshire**   
GOOD NEIGHBOURS

**Are you a carer?**

**Do you look after someone – a relative, friend, neighbour?**

Would you like to know more about the support, help, and advice that is available to carers?

Do you ever feel isolated, alone, or that no one understands the responsibility of being a carer?

For more information on this matter or any other issue that is worrying you  
Please call

Lucy Hawkins - Good Neighbour co-ordinator Marlborough rural area  
07557922030

[marlboroughgnc@communityfirst.org.uk](mailto:marlboroughgnc@communityfirst.org.uk)

**Good Neighbours is a free and confidential service**

## Avebury Community Orchard

Sunday 8<sup>th</sup> December saw some Avebury & Trusloe families come together on the Avebury sportsfield to plant eight young apple trees as the start of the Avebury Community Orchard. The idea for the Community Orchard came during H.M. The Queen's Diamond Jubilee celebrations in 2012 as we wanted to create a commemorative orchard in Avebury parish. The sportsfield was chosen as the best location after consideration of several sites, and, following some hard work from The National Trust's volunteers who cleared the area and dealt with the overgrown hedge, we were able to plant the first trees - all Wiltshire apple varieties from

Barter's Plant Centre, Westbury. Some of the youngest members of the parish helped with the planting and a fun time was had by everyone followed by a meal in the re-decorated Red Lion pub.

In future we hope to plant three more, slightly older apple trees to join the rest, and eventually hold community apple days on the sportsfield to allow everyone to enjoy the harvest. Thank you very much to Avebury Parish Council, The National Trust and Wiltshire Wildlife who have provided lots of help and support so far for this project.

If you'd like more information about the Community Orchard or would like to join the project please get in touch with Janet Polack via the Avebury Community Shop.

  
**Carpet Angels**

Carpet, Rug & Upholstery Cleaners

- Professional, Reliable & Fully Insured
- Locally Based Family Run Business
- Over 10 Years Industry Experience
- Powerful, High Performance Equipment
- References Available upon Request
- Satisfaction Guaranteed or Pay Nothing

01672 563100

Angel House, High Street, Marlborough SN8 1AA



## ANTIQUUE CLOCKS

Musical Boxes and Barometers  
REPAIRS AND SALES

**B.A.D.A. and B.H.I. Qualified**  
Established over 30 years

**Time Restored Limited**  
20 High Street  
Pewsey SN9 5AQ  
01672 563 544



### K. A. Callaway. Great Bedwyn WOODSTOVES & CHIMNEY LININGS

Woodstoves: many makes, new and second hand discounted.

Flue lining: Stainless steel, ceramic, pumice. Installed TV flue camera for internal chimney inspection.

Anti-jackdaw cages for bird protection.

FREE site visit and advice recommended

Tel: 01672 870619 Mobile: 0860 722646

Let me do the job you hate!

# OVENCLEAN

## Domestic Oven Cleaning

We offer a high quality cleaning service for Ovens, including Agas, Hobs & Extractors using the latest equipment & cleaning technology to remove heavy grease & burnt on carbon deposits which form naturally with constant usage.

Non caustic, fresh solution used for every clean  
For your local, professional service  
call 07723 048436



## F. DEWEY

FUNERAL DIRECTORS PEWSEY

PORTMAN HOUSE · 3 MARKET PLACE · PEWSEY · WILTS · SN9 5AA  
Telephone: Marlborough (01672) 563440

- Independent Family Funeral Directors
- 24 Hour Caring & Professional Service
- Private Chapel of Rest
- Providing a Complete & Dignified Funeral Service



## Richard Hartshorn

Bricklayer and General Builder

New Builds  
Extensions  
Alterations  
Maintenance  
Walls, Patios  
Paving  
Roofing  
Floor and Wall



Tel: 01672 861113  
Mob: 07816 273930

# WS

# SWIFT Services Ltd

HEATING ENGINEERS  
SERVICING · INSTALLATION · MAINTAINANCE

1 Glenmore Business Centre.

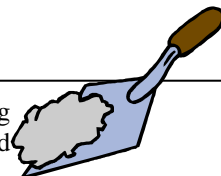
Hopton Park  
London Rd. Devizes  
SN10 2EQ

Tel: 01380 726284

Fax: 01380 726297

## Brian Watts

Brickwork, Ceramic Tiling, Painting and Decorating, Garden Fencing and General Maintenance.



With 30+ years of experience, there isn't much I haven't come across, so for a free quotation or simply to 'Pick my brain!' Contact me:-

5 Southfield,  
West Overton,  
Wilts, SN8 4HE

Phone: 01672 861438  
Mobile: 07732989650  
E-mail: brianwattsbuilds@gmail.com

## JILL SUDBURY

REFLEXOLOGY,  
REIKI COUNSELLING,  
CAMBRIDGE WEIGHT PLAN  
CONSULTANT

The Wellbeing Clinic  
6 London Road. Marlborough  
07973 951286 or 01672 513583

WELDING BREAKDOWN  
M.O.T.S. SERVICING

CHALKY'S  
WORKSHOP

Hillside Farm, Rhyles Lane,  
Lockeridge,  
TEL: 01672 861123



## M R H Builders LTD

Extensions, Conversions, Carpentry  
Painting and Decorating

Telephone 01672 515558  
Mobile 07866433397

## Avebury & District WI

The W.I. held a successful Christmas lunch at the White Horse, Compton Bassett on Thursday the 12th of December when 27 members attended. Our competition winners this year were Muriel Dobson and Charlotte Powell who won £10 and £5 Marks and Spencer vouchers respectively - it's worth entering isn't it!?

The January Meeting on Thursday the 9th is at 2pm at the Social Centre in Avebury and is a demonstration on nutritional cooking. The competition is a decorative spoon and/or a quirkily-shaped vegetable or fruit. As a New Year reminder that subscriptions are due, a cheque made out to Avebury & District WI placed in an envelope with your name on it, would, as we noted in our inserted note last month, be calculated to make our hardworking Treasurer smile.

I send my best wishes to all for the New Year of 2014.

Mary Beale

## CHARITY AUCTION OF PROMISES SUCCESS

Thank you for all the generous support of local people and businesses that enabled this yearly event to achieve its record level of fundraising. Almost £5,000 will be shared equally between local charities - Wiltshire Air Ambulance and Kennet Community Transport - and local organisations - Avebury Cricket Club and Avebury & District Club. Please diary Saturday 6th December 2014 to enjoy the fun of next year's event.

From the Committees of Avebury & District Club and Avebury Cricket Club

## KENNET VALLEY 60+ CLUB

A meeting of the 60+ Club was held on the 20 November in the Kennet Valley Hall. The Chairman gave out the following notices. We were very pleased to receive a donation towards our Christmas lunch from the Overton Village Fete Committee, which was very gratefully received. There will be a quiz held at the January meeting of the club. There will also be a talk by Carol Southall about the best way to save energy in the home. Christmas lunch will be held at the Crown, Marlborough on the 12 December, 12 noon for 12.30pm.

We all had an enjoyable afternoon playing ten pin bowling, which was won by the Chairman. After the raffle and tea and biscuits the meeting closed at 4pm

## A True Community Success

Success is certainly the right word as the hall was heaving at the Christmas Bingo Event at Kennet Valley Hall on December 13th with an attendance of around 110. Not many people left without a prize as the stage and raffle tables were literally overflowing with prizes.

This success was in no small way due to the team of collectors who put in their efforts for the House to House Collection. Even in these austere times it was amazing that our local residents were so generous, so a big thank you to everyone who donated something towards the prizes.

Thanks are also due to the numerous local businesses who contributed a variety of gifts for the evening. With a special mention for our two local pub's The Bell and The Who'da Thought It who were both most generous. Not to forget our local shop Fyfield Filling Station who provided a selection of produce for the Hampers.

Thank you also to those who on the day contributed so much; whether providing decorations, organizing the refreshments, working in the kitchen, selling raffle tickets, or the very special efforts of Colin Watts and Rob Duckett for managing the whole proceedings.

Finally, very special thanks to Colin and Vera Watts for all their efforts behind the scenes in accumulating the produce and then making up all the Hampers ready for the event.

**I save the best news for last – the evening produced income for the Hall of £844. A spectacular result.**

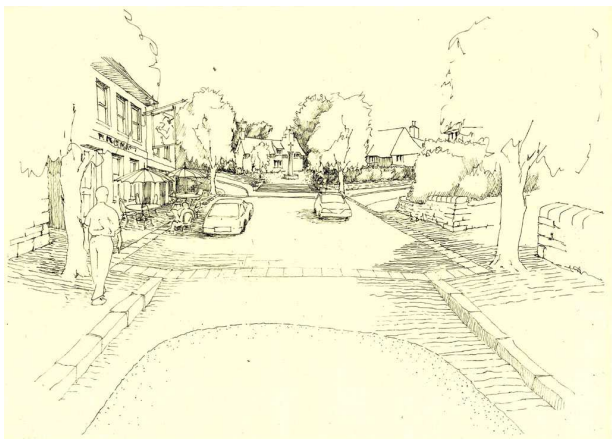
This was a truly community event with so many people contributing in one way or other.

KVH Committee

## Fyfield and West Overton Parish Council

Parish Clerk Sophie Roberts 01672 861262

[parishclerk.fyfield@gmail.com](mailto:parishclerk.fyfield@gmail.com) [www.fwoparish.org.uk](http://www.fwoparish.org.uk)



**Traffic in the Villages.** The Marlborough Village Traffic Initiative (Headed by Ben Hamilton Baillie) is still on going. We are trying to make our villages safer for adults and children alike. We want the people inside their cars and lorries to understand they need to slow down and take care as they enter a village and they need to notice that people actually live there. We offered an initiative for each of our 3 villages to the CAGT meeting. The one considered at the recent meeting was that for Lockeridge, mostly because it is where the school is situated. The proposal is to have traffic calming at the junction by the school. It has already been discussed with Wiltshire Highways and we await the decision about funding.

**Litter Picking.** We have employed Bruce for more hours to pick up the rubbish which seems to have increased in our village streets. Some may be thrown from cars, but some is more local. Please endeavour to keep our Villages Tidy.

**West Overton Footpath.** The work to tidy up and resurface one of the footpaths in West Overton is now finished.

**Dog Waste.** Please note that there are now stickers on waste bins around the villages to let you know you can dispose of 'Bagged Dog Waste' in them. Please ensure you do not let your dog onto the play areas in West Overton, Fyfield or Lockeridge. It is disgusting and totally irresponsible to allow your dog to foul areas where children play.

**Adverts on Telegraph Poles.** This is a really good way of letting people know of upcoming events, however if you put one up you can make sure you take it down after the event. Some of the posts are plastered in posters and just look horrid.

**Planning Issues.** The residents of Fyfield are unhappy that Wiltshire Council decided to give retrospective planning permission to the business park, despite their objections and attendance at the meeting in Trowbridge. The proposed development at Manor Farm in West Overton is still on going and Lockeridge continues to have applications about tree work and houses in the Conservation Area in particular.

**The Next Parish Council Meeting is at the Kennet Valley Hall on**

**Monday 25<sup>th</sup> January at 7pm**

**All are welcome**

**Details will be on the Parish Notice Board of your Village**

*Judith Woodget Communications*



## Marlborough Downs Nature Improvement Area:

### What's been going on?

The onset of winter within the Marlborough Downs sees us busy working on projects and planning more projects for the coming year. Recent weekends have seen good attendance at the Christmas Owl Prowl at Rockley and the Friends of the Railway Path work day. Construction of the newest dew pond at Rockley is underway and the planting of tree sparrow 'villages' continues apace, providing everything needed to encourage these endangered farmland birds we are lucky to still have in our area.

There are many 'winter feed' bird seed plots within the NIA; some planted by this project and others in government environmental schemes of which farmers are members. With favourable weather and conditions this year, these plots flourished and wild birds are now reaping the benefits by eating the seeds and grains. When this seed runs out, the birds have a difficult time during the time known as the 'hungry gap', where food in nature has run low and spring growth has not yet started. The MDNIA has secured cereals and seeds which will be fed across the Nature Improvement Area to help the wild birds survive the winter. Many MDNIA members and volunteers are gearing up to regularly feed the birds during these hard months.

In addition to the many projects on the ground, we are also planning the events calendar for next year, which will include opportunities to get involved in the project or to get out into the countryside to see what is being done to protect and enhance habitats and the landscape around us. Take a look at the website [www.mdnia.org.uk](http://www.mdnia.org.uk) which is packed with information on the project. For up to date posts and stunning photographs, visit our Facebook page at [www.facebook.com/MarlboroughDownsNIA](http://www.facebook.com/MarlboroughDownsNIA) -no login necessary.

As usual, if you are interested in getting involved as a volunteer, please contact Ali Rasey on 01225718758 or [alison.rasey@wiltshire.gov.uk](mailto:alison.rasey@wiltshire.gov.uk)

Suzie Swanton, MDNIA farmer member.

**The Zoots are famous for their  
1960's show, touring all over the  
world performing all the classic  
hits you remember.**

**FOR ONE NIGHT ONLY  
At the Kennet Valley Hall  
On Friday February 7<sup>th</sup> 2014  
(Doors open at 7.30)  
Tickets £10 each (In Advance  
only)**

**Phone:**

**Carolyn Stimpson 01672 861373**

**Ann Butler 01672 861103**

**[www.thezoots.com](http://www.thezoots.com)**



## DICK WHITTINGTON AND HIS CAT

The Kennet Valley Amateur  
Dramatic Society is pleased to  
announce its next pantomime  
Performances at the Kennet  
Valley Hall on:

Friday 31<sup>st</sup> January 2014  
at 7:30pm

Saturday matinée on  
1<sup>st</sup> February 2014 at 2:30pm

Saturday evening on  
1<sup>st</sup> February 2014 at 7:30pm

**Ticket prices:**

16yrs and over £6.00

Under 16yrs £4.00

**Box Office**

**Jean Clements**

Email:

[Jean@jclements.orangehome.co.uk](mailto:Jean@jclements.orangehome.co.uk)

Tel.: 01672 861423

**John Bartle**

Email: [jbartle@tiscali.co.uk](mailto:jbartle@tiscali.co.uk)

Tel: 01672 861484



## GARDENING AND PAINTING SERVICES

Gerald Clarke  
Tel: 01672 539470  
Mob: 07886 233314



## GETT

### Landscaping

Patios, Decking, Driveways  
all types of groundwork  
Fully insured.

Phone for a free quote  
Phone: 01672 861392 Mobile: 07811 142390



## Make life easier

### On the move

Large range of mobility aids  
Mobility scooters  
Hire services; Stairlifts

### Rise and recline chairs

### Footcare

Cosyfeet shoes and slippers  
Footcare appointments

Free hearing health check

[www.thehearingandmobilitystore.co.uk](http://www.thehearingandmobilitystore.co.uk)

Bourton on the Water 01451 810088

Wroughton 01793 815083

Marlborough 01672 511550

## RIDGE HOUSE BED & BREAKFAST FYFIELD

Contact: Virginia Hemery  
Tel: +44 (0) 1672 861527  
Email: [bookings@ridgehouse.info](mailto:bookings@ridgehouse.info)  
Website: [www.ridgehouse.info](http://www.ridgehouse.info)

## *Est. 1991* D. W. Oliver Tree Services Ltd



*B.Sc.A.I.W.Sc.*

TREE PRUNING  
LANDSCAPING  
WOODCHIPPING  
TREE FELLING  
FORESTRY CONTRACTING  
FENCING

Tel 01672 861310

Mobile 07976 644706

FOR A FREE QUOTE

£5M INSURANCE

Tree Surgery works carried out by qualified staff

E-mail: [dwoliver@btinternet.com](mailto:dwoliver@btinternet.com)

Web: [www.dwoliver.com](http://www.dwoliver.com)

## Dianne Mackinder Funeral Service



ON CALL DAY & NIGHT  
01672 512444 OR 810727

WAGON YARD LONDON ROAD  
MARLBOROUGH WILTSHIRE  
SN8 1LH

## CHARTERED PHYSIOTHERAPIST

Debbie Simpson MCSP SRP (Bupa registered)  
Musculo-skeletal specialist  
Sports injury and Fitness management  
Acupuncture registered  
Pilates & Nordic walking instructor  
Lockeridge clinic: 07724 486370 / 01672 861362

## Individual, Relationship & Couples Counselling

Elizabeth Fitzpatrick

Counsellor/Psychotherapist, Registered MBACP (Accred)

*"All of us every single year, we're a different person. I don't think we're the same person all our lives."* (S. Spielberg)

Counselling can be particularly helpful with: Relationship problems, Early life Experiences, Depression, Anxiety, Unexplained Anger, Bereavement, Menopause, Low self esteem and uncertainty about decisions.

Appointments available in Marlborough or Swindon

Tel: 07810 861291

[www.relationshipcounsellingswindon.org.uk](http://www.relationshipcounsellingswindon.org.uk)

# AMI GOLDING

## MOBILE PET GROOMING SERVICES



Tel: 01672 521296

Mob: 07813 534902

Email: washnwoof@yahoo.co.uk

Grooming of ALL breeds Of Dog, Large or Small.


Cats welcome too !

Nail Trimming for All Animals (Rabbits Guinea Pigs etc.)

Pet Micro Chipping Service, Dog / Cat Sitting Service

Horse Clipping Service

PLEASE CALL ME TO DISCUSS YOUR REQUIREMENTS

 Find us on Facebook

If you are thinking about

## Selling your house...

And live between West Kennet & Manton...

Please give Rob or Alice a call

on 07879645682

We are looking for a 3-4

Bed cottage in 2014

And are chain Free.



## LCP BOOKKEEPING AND ACCOUNTING SERVICES

CHARTERED ACCOUNTANT

Lindsay Peck BSc FCA

Accounts and Tax for Sole Traders,

Partnerships and Limited Companies

Self Assessment Tax returns

Bookkeeping, Payroll and VAT

Sage support/training

[Lindsaypeckbookkeeping@hotmail.com](mailto:Lindsaypeckbookkeeping@hotmail.com)

Tel: 07867 646964/01672 539388

## What has Been Happening at Kennet Valley School in December?



We had the much feared phone call from OFSTED this month. Now they call the day before and spend the next couple of days in the school. We knew it was likely to happen so Staff and Governors have been attending the appropriate training days and knew exactly what to expect. The Thursday and Friday carried on as usual with pupils attending the planned Hockey match and swimming lessons. We awaited the Inspectors Report rather nervously, but we knew we were a good school and OFSTED also categorized us as a 'GOOD SCHOOL'. We all know that next time we will do even better and become OUTSTANDING.

The Dragon Club is now well established and running smoothly on Monday to Thursday from 3.10 to 5.45pm.

Our Hockey and Netball Teams have been taking part in cluster festivals. They have done very well and we are happy to report that they have conducted themselves very well even in difficult situations.

The annual Christmas play was 'Gabriel's Big Break' this year. It took place at the Kennet Valley Hall to a full audience. The children rehearsed their parts well and it was a hugely successful evening.

The Christmas Fayre, organised by 'The Friends', was a great success and the school was full of families having lots of fun. 'The Friends' had been into the school working with the children to make Christmas Decorations which were on sale at the Fayre. We would like to thank people in the village for their donations to the Tombola.

Our children sang beautifully at St Mary's Church in Marlborough on the evening of 'Marlborough Christmas Lights' being turned on by the Mayor.

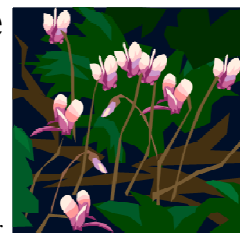
They also sang for the elderly people at the 'Jubilee Centre' in Marlborough. It has become an annual event and the audience always love the concert and our children.

Some of our older pupils participated in the Christmas Charity Carol Service at Marlborough College Chapel the weekend before the end of term.

The last week of term saw a marvellous Carol Service at West Overton Church, where the children sang traditional carols with a new twist. It was followed by a collection for The Trussel Trust.



## Lockeridge Live



Traffic Calming at the  
Entrances to the Village

On a chilly November day Mary, Susanne, Janet and Judith planted well over a hundred flower bulbs in the vicinity of the gates at the two main entrances to the village. The bulbs were chosen to naturalise and add more interest at the entrances in the spring. Maybe they will help to slow traffic down, as drivers realise they are entering our 'Living Room'..

The bulbs were chosen so the flowering period would extend from January through to April and May. They were also chosen to look and spread naturally. In time we hope to start with a carpet of winter aconites to brighten those short New Year Days, followed:

Crocus tommasianus  
Narcissus obvallaris  
Narcissus pseudonarcissus  
Narcissus 'Old Pheasant's Eye'  
Camassia 'The Quamash'  
Cylamen hederfolium.

Keep an eye open when you drive through Lockeridge, although it may take a few years for the promised carpets to get established.



## Judith Woodget

B.Sc. (hons,) Dip. PSGD

### Garden Designer

From Concept to Installation

We can work together to solve your problems.

Contact me: 01672 861314, 07968349269 or

judithwoodget@btinternet.com

Look at [www.mamut.net/judithsgardendesign](http://www.mamut.net/judithsgardendesign) to see some of my work

### Mack's Handyman Services

07788 255 969

a helping hand with the jobs that need doing

- Interior and exterior painting
- General DIY - no job too small
- Window cleaning
- Patios laid and repaired
- Fences and sheds erected
- Gardening work
- Tree/hedge cutting
- Guttering cleaned and repaired

## ron dobson associates



architectural services:

new build, conversion, extension  
design, planning applications, building regulations  
project management, contract administration

Studio 126, Berwick Bassett, Swindon SN4 9NF

T: 01793 731661

E: [ron@rondobson.co.uk](mailto:ron@rondobson.co.uk)

W: [www.rondobson.co.uk](http://www.rondobson.co.uk)

*'the professional approach to building solutions'*



## Superclean Domestic Cleaners

local family ran cleaning business, no job to big or small

We supply all our own products and equipment we are fully Insured.

If you would like help with your cleaning or would like to chat about the services that we can offer, oven's, carpet cleaning etc. give us a call or send us an email

01264 839209 or 01672 521094

Direct 07708835356 email

[super.clean@btinternet.com](mailto:super.clean@btinternet.com)

## Home-help / Gardener

Available for; Cleaning, cooking, gardening, driving and pet care (including horses).

Contact Jacky on 01672 539379

[Jacky.shepherd@btinternet.com](mailto:Jacky.shepherd@btinternet.com)



Every day Aster Living helps thousands of people to live their lives.

We all value our independence and our Assisive Living team can help you to keep yours. The service is available to anyone who has a disability, or is over 60.

Our friendly, professional and multi-skilled team provide a handyperson and minor adaptations service. They can also install telecare alarms and sensors, with 24 hour emergency back-up.

**We can help with things like:**

- Putting up shelves
- Moving furniture around your home
- Building flat pack furniture
- Fencing
- Making your home safe and secure
- Minor plumbing or electrical work.

No job is too small. And our rates are competitive. Members of our team who visit customers have an enhanced DBS (Disclosure and Barring Service) check.

Contact us  
Tel: 0333 400 8299  
Email: [info@asterliving.co.uk](mailto:info@asterliving.co.uk)  
Or visit our website [www.asterliving.co.uk](http://www.asterliving.co.uk) where you can hear some of our customers telling their story. Please quote DR 1337 when you contact us.





# HOME INSPIRATIONS LTD

## Kitchens, Bathrooms & Bedrooms



*A fresh and exciting range of traditional woods and stylish contemporary finishes to suit every taste and budget.*



- Free measure and design service
- Fully project managed installation service undertaken by our own employed fitters
- Small professional family run business with over 20 years experience

**TELEPHONE 01380 728644**

Email: [info@homeinspirations.co.uk](mailto:info@homeinspirations.co.uk) • [www.homeinspirationsltd.co.uk](http://www.homeinspirationsltd.co.uk)  
 White Horse Business Centre, Hopton Park Ind Est, Devizes, Wiltshire SN10 2HJ

# Pebbles

## Bumps, Babies & Toddler Group

Every Wednesday term-time  
 9.15am - 1 1.30am

Parents/Carers/Childminders/Nannies, you are all invited to come along where you will be warmly welcomed by the Toddler

Co-ordinator who manages our weekly group. We are located in the social centre on the High Street in Avebury (opposite the Church).

Come in for a cup of tea and meet new people. Your children will be able to play in a safe, secure environment and are invited to join in any organised activities and are offered an enjoyable, healthy snack.

We look forward to seeing you soon!

PSLA Member No. Q140G28604.  
 Registered Charity No. 299677

## Carpet Clean

*Ricky Flint*  
 Est. 1997

### Friendly local service

Professional work at sensible prices  
 Call for no obligation quote Mobile: 07799 215837  
 Great Bedwyn 01672 871414

## EARTHWISE GARDEN DESIGN LTD. ANYA HOPE MEDLIN (MA Cantab)



Qualified and experienced horticulturalist and garden designer offers an individual and personal service.

- \* Complete design and build service
- \* Planting plans for complete gardens or single borders
- \* Restoration of neglected gardens
- \* Consultation and plant sourcing
- \* Wild gardens/personalised retreats

Tel/Fax 01672 861462 Mobile 07970 590674  
 e-mail:- [anya.earthwise@googlemail.com](mailto:anya.earthwise@googlemail.com)



## S. White GARDEN MAINTENANCE

Tel: 01672 515415  
 Mob: 07917 353314

GRASS CUTTING  
 HEDGE CUTTING  
 TREE FELLING  
 PLANTING

## ROSS EDWARDS Building Contractor

New Buildings, Extensions, Maintenance and Alterations  
 12 Thomson Way, Marlborough  
 Telephone 01672 514020  
 email: [redwards03@tiscali.co.uk](mailto:redwards03@tiscali.co.uk)

## DOG WALKER AND PET SITTER

kind, caring and reliable local lady  
over 50 years experience with dogs/pets  
CBR checked and insured

**dog walking + pet sitting, pet day care/  
live-in care.**

**Pop-in visits for all types of pet**

contact:- [K9dogwalkerandsitter@gmx.com](mailto:K9dogwalkerandsitter@gmx.com)

or 07967 157574

Member of the Institute for Animal Care  
Education

## M J Sly Monumental Sculptor

**New Memorials and Restorations  
All types of memorials**

Handcrafted to a high standard in our own workshops at  
Pelham Court, London Road  
Marlborough

**\*\*FREE Quotes Given\*\***

Telephone: (01672) 516797

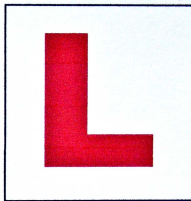
[martin@mjsly.co.uk](mailto:martin@mjsly.co.uk)

For a free memorial brochure

## OVERDRIVE DRIVING TUITION

Geoffrey Emberlin DSA ADI

Pass Plus Registered Instructor.  
Driving Instructors Association  
Member (DIA).



Phone: 01672 861613

Mobile: 07789184744

E-mail: [gemberlin@btinternet.com](mailto:gemberlin@btinternet.com)

# Austin

(Heating & Air Conditioning) Ltd

**SPECIALISTS IN  
OIL, GAS, LPG & WARM AIR HEATING SYSTEMS**  
Servicing & repairs / Installation  
Landlord's Certificates / Gas Safety Records

Tel: (01793) 536871

Email: [general@austinheat.com](mailto:general@austinheat.com)

Website: [www.austinheat.com](http://www.austinheat.com)

Trading for over 40 years

# ARMISHAW'S

## REMOVALS & STORAGE

*"Moving at the highest standard"*

**You can be sure of Armishaws:**

- UK - local and long distance
- Full **European** service -  
**France, Spain and Portugal**
- Full- and **part-loads**
- Full **packing** service
- Containerised **storage**
- Friendly, **personal**  
service
- **Local** business, **family**  
**owned** and run since 1973

For a survey and **FREE same day** quote call

# 0845 270 3350

visit our website at: [www.armishaws.com](http://www.armishaws.com)

or email us at [enquiries@armishaws.com](mailto:enquiries@armishaws.com)



KM503480



ISO 1941:99



FEDEMAC  
EUROPEAN MOVERS



A101

**Thursday Nights Darts League**

**Friday Nights Skittles League**

*Unless stated all activities start at approx 8.15 pm*

**Saturday 4<sup>th</sup> - Fun & Games Night**

**Saturday 11<sup>th</sup> - Darts Truman's Cup – MEMBERS ONLY**

**Saturday 18<sup>th</sup> - Skittles for Cash**

**Saturday 25<sup>th</sup> – BIG Money Bingo – win £££££**

*Sunday Bingo 5<sup>th</sup>, 12<sup>th</sup>, 19<sup>th</sup> & 26<sup>th</sup> - Eyes down 8.00pm - ££ Cash prizes*

**JANUARY IS MEMBERSHIP RENEWAL TIME £5 per ADULT**

**WHILE STOCKS LAST – FREE 2014 DIARY WITH EACH MEMBERSHIP**

**NEW MEMBERS ARE ALWAYS WELCOME**

**Avebury Club is available to hire, contact Alan – Secretary on 07879 486905 or call Avebury Club (when open) on 01672 539258 or visit Avebury Club website to check availability. [www.avebury-club.co.uk](http://www.avebury-club.co.uk) ALL ENQUIRIES AND BOOKINGS ARE TO BE AGREED AND FINALISED WITH THE CLUB'S SECRETARY ONLY.**

## WHO'S WHO in the Upper Kennet Churches

**RECTOR - REV'D MARIA SHEPHERDSON**

The Rectory, 27 High Street, Avebury, SN8 1RF

01672 539643

email [mariashepherdson@rocketmail.com](mailto:mariashepherdson@rocketmail.com)

**If you require a priest in an emergency and are unable to contact Rev'd Maria please telephone one of the churchwardens.**

### LAY PASTORAL ASSISTANTS

Mrs Claire Stiles

01793 731620 [c.j.stiles@hotmail.co.uk](mailto:c.j.stiles@hotmail.co.uk)

Mr Graham Kitchen

01672 861349 [graham@grahamkitchen.com](mailto:graham@grahamkitchen.com)

**BENEFICE OFFICE: Ray Manley, Anne Robinson (Mon-Thurs, 10am-1pm)**

Address: The Garden Room, 62 Lockeridge, SN8 4EL

01672 861786 e-mail: [office@upkennet.eclipse.co.uk](mailto:office@upkennet.eclipse.co.uk)

### CHURCHWARDENS

#### AVEBURY

Mr David Davidge

01672 513819 [mail@dwdmar.plus.com](mailto:mail@dwdmar.plus.com)

Mrs Maureen Dixon

01672 539690 [modixbirds@yahoo.co.uk](mailto:modixbirds@yahoo.co.uk)

#### EAST KENNETT

Mr Graham Kitchen

01672 861349 [graham@grahamkitchen.com](mailto:graham@grahamkitchen.com)

Mrs Jo Snape

01672 861267 [Josiesnape@aol.com](mailto:Josiesnape@aol.com)

#### WEST OVERTON

Mrs Susan Rogers

01672 861374 [sjrogers44@gmail.com](mailto:sjrogers44@gmail.com)

Mrs Jane Ryan

01672 861640 [jryan100@hotmail.co.uk](mailto:jryan100@hotmail.co.uk)

#### FYFIELD

Ms Vicky Evans

01672 861622 [vickyevans1@btinternet.com](mailto:vickyevans1@btinternet.com)

#### WINTERBOURNE MONKTON

Ms Penny Gold

01672 539158 [goldpennygold@aol.com](mailto:goldpennygold@aol.com)

#### WINTERBOURNE BASSETT

Mr Martin Knight

01793 731764 [martin@vintry.co.uk](mailto:martin@vintry.co.uk)

Mr Peter Barry

01793 731589 [peterkate@tiscali.co.uk](mailto:peterkate@tiscali.co.uk)

#### BROAD HINTON

Mrs Jenni Moseling

01793 731629 [jenni.moseling@btinternet.com](mailto:jenni.moseling@btinternet.com)

Miss Sally Cartwright

01793 731050 [sally.cartwright@broadhinton.org.uk](mailto:sally.cartwright@broadhinton.org.uk)

#### Benefice Council Lay Chairman

Mr Mark Wightman

01793 731452 [wightman1944@btinternet.com](mailto:wightman1944@btinternet.com)

### PAROCHIAL CHURCH COUNCIL SECRETARIES

#### AVEBURY

Mr David Davidge

01672 513819 [davemar@tiscali.co.uk](mailto:davemar@tiscali.co.uk)

#### EAST KENNETT, FYFIELD

#### & WEST OVERTON

Mrs Anne Robinson

01672 861169 [office@upkennet.eclipse.co.uk](mailto:office@upkennet.eclipse.co.uk)

#### WINTERBOURNE MONKTON

Mr Bill Buxton

01672 539199 [bill.buxton@btinternet.com](mailto:bill.buxton@btinternet.com)

#### WINTERBOURNE BASSETT

Mrs Clare Knight

01793 731764 [clare@vintry.co.uk](mailto:clare@vintry.co.uk)

#### BROAD HINTON

Mr Adrian Overson

01793 731064 [a.c.overson@btinternet.com](mailto:a.c.overson@btinternet.com)

### MAGAZINES

Final copy date 3<sup>rd</sup> Friday each month unless otherwise notified.

**UPPER KENNET NEWS** in Fyfield, West Overton, East & West Kennett, Beckhampton, Avebury Trusloe, Avebury, Winterbourne Monkton & Berwick Bassett:

**Editor David Throup**, Longmynd, Lockeridge SN8 4ED

01672 861279 [davidthroup@aol.com](mailto:davidthroup@aol.com)

Please send all copy including advertising and payment to David Throup.

Cheques payable to "Upper Kennet News"

**LOCAL NEWS** in Uffcott, Broad Hinton & Winterbourne Bassett:

**Editor Tim Powell**

01793 739083 [news@onefivetwo.co.uk](mailto:news@onefivetwo.co.uk)

## Kennet Valley Film Nights Winter Season 2014

Sunday 19th January

### **BLUE JASMINE (12A)**

Woody Allen's acclaimed and very successful drama. After everything in her life falls to pieces, including her marriage to a wealthy businessman, elegant New York socialite Jasmine (Cate Blanchett) moves into her sister Ginger's modest apartment in San Francisco to try to pull herself back together again.

"Blanchett is beyond brilliant, beyond analysis. This is jaw-dropping work, which we go to the movies hoping to see, and which we only do every few years."<sup>1</sup>

Excellent San Francisco locales and a lovely supporting cast including Sally Hawkins, Toni Collette and Alec Baldwin

Sunday, 16<sup>th</sup> February 2014

### **CAPTAIN PHILLIPS (12A)**

The riveting new film from British director Paul Greengrass is a taut, high-stakes thriller based on the true story of a Somali pirate hijack of an American container ship in 2009. The film focuses on the relationship between Captain Richard Phillips (Tom Hanks) and the Somali pirate captain, Muse, who takes him hostage. In the ensuing stan... Moredoff, 145 miles off the Somali coast, both men find themselves at the mercy of forces beyond their control. Tom Hanks gives the performance of a lifetime.

Sunday, 9<sup>th</sup> March 2014

### **PHILOMENA (12A)**

From the director of 'The Queen' and likely to be a similar mega-hit. Judi Dench plays the real life Philomena Lee, an Irish woman searching for the illegitimate son taken from her or adoption by her Irish-catholic community, assisted by Steve Coogan as the journalist, Martin Sixsmith. Funny, beautifully done on all levels. Everyone will want to see this film.

Sunday 13th April 2014

### **SAVING MR BANKS (12A)**

Fascinating and likeable drama which tells the story of how Walt Disney (played eerily by Tom Hanks) persuaded a reluctant P.L.Travers (Emma Thompson) to allow him to film her book *Mary Poppins*. In his 20-year quest to obtain the rights, Walt comes up against a curmudgeonly, uncompromising writer who has absolutely n... Moreo intention of letting her beloved magical nanny get mauled by the Hollywood machine.

Emma Thompson is superb in this lovely, sentimental and quietly insightful account of the making of *Mary Poppins*

Doors open at 7.00 and there is a licensed bar and soft drinks. The films start at 7.30.

To reserve tickets phone Carolyn Stimpson on 01672 861373

## DICK WHITTINGTON AND HIS CAT

The Kennet Valley Amateur Dramatic Society is pleased to announce its next pantomime Performances at the Kennet Valley Hall on:  
Friday 31<sup>st</sup> January 2014

at 7:30pm

Saturday matinée on

1<sup>st</sup> February 2014 at 2:30pm

Saturday evening on

1<sup>st</sup> February 2014 at 7:30pm

See page 9 for details

### Advertisers Index

Company	Telephone
Ami Golding—Pet Grooming	01672 521296
Armishaws Removals	01963 34065
Austin Heating	01793 536871
Avebury Club	01672 539258
Brian Watts	01672 861438
Carpet Angels, Marlborough	0800 6122668
Carpet Clean	01672 871414
Chalky's Workshop	01672 861123
David Oliver Tree Services	01672 861310
Diane MacKinder	01672 512444
Earthwise Garden Design	01672 861462
F Dewey	01672 563440
Gardening and Painting - G. Clarke	01672 539470
Gett Landscaping	01672 861392
Home Inspirations Ltd	01380 728644
Jill Sudbury. Reflexology and Reiki Counselling	01672 513583
Judith Woodget Garded Design	01672 861314
K A Callaway. Woodstoves and chimneys	01672 870619
Mack's Handyman Services	07788 255969
M J Sly. Monumental Mason	01672 516797
MRH Builders	01672 515558
Mobility Store	01672 511550
Ovenclean	01249 650398
Overdrive driving tuition	01672 861613
Pet Minding service - Glyn Brown	07967 157574
Physiotherapy - Debbie Simpson	01672 861362
Relationship Counselling	07810 861291
Richard Hartshorn	01672 861113
Ridge House B&B	01672 861527
Ron Dobson - Architects	01793 731661
Ross Edwards	01672 514020
S White	01672 515415
Time Restored	01672 563544
W.S. Swift	01380 726284